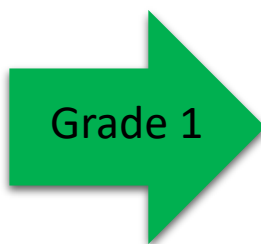


Stages of Gum and Bone Health



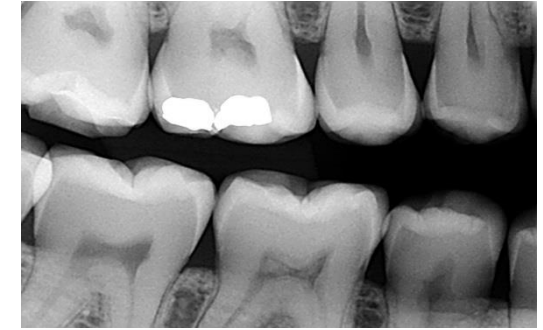
Healthy Gums

Pale Pink Gums
No Bleeding with flossing, brushing, or probing
Fresh Breath
Probing 1-3mm



Healthy Gums

No Tarter seen in x-rays
No Bone loss in x-rays
-Gums form protective seal around tooth.
-Healthy gums contain fluid loaded with antibodies, not blood.



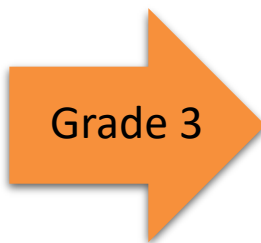
Gingivitis

Bright Pink or Swollen Gums
Bleeding Gums when probing
Calculus visible on teeth
Possible bad breath
No Bone loss
No Tooth mobility
Probing 3-4mm



Gingivitis

Tarter visible on teeth
No Bone loss
-Gums are not functioning properly- the seal is under attack by bacteria.
-We need to remove build-up to heal gums and get back to a healthy state.



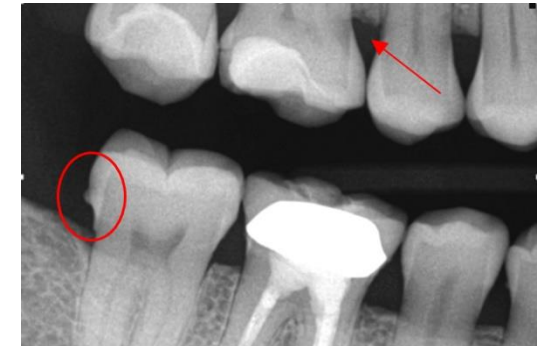
Early Periodontitis

Deep Pink, Swollen Gums
Bleeding Gums when probing
Calculus deposits extended
Slight Bone loss
Possible Tooth Mobility
Deepening Pocket
Probing 4-5mm



Early Periodontitis Untreated Gingivitis

Tarter visible on x-rays
Slight Bone loss
Possible Tooth Mobility
Deepening Pocket
-Bacteria is attacking your gum tissue and has spread deeper below the gum line.



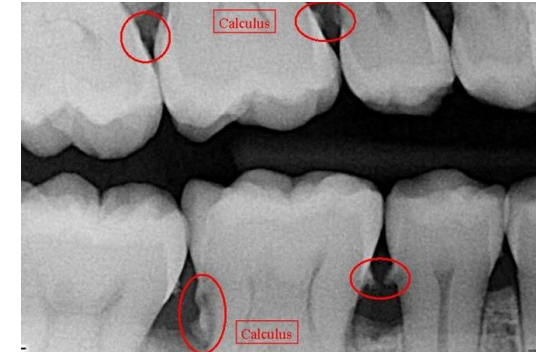
Moderate Periodontitis

Red, Swollen Bleeding Gums
Calculus extends down root
Deposits visible on x-rays
Persistent bad breath
Moderate 25-50% Bone Loss
Possible Tooth Mobility
Deep Pocket
Probing 5-6mm



Moderate Periodontitis

Calculus extends to root
Moderate 25-50% Bone Loss
-Bone Loss is irreversible
-The disease is actively destroying the bone holding your teeth in place causing bone level to drop.
-Exposed root surfaces harbor more bacteria.



Advanced Periodontitis

Severe Inflammation
Extensive Calculus
Deposits visible in x-rays
Severe 50% (+) Bone Loss
Gums are not firmly attached
Loose Teeth
Puss around the gums



Advanced Periodontitis

Extensive Calculus
Puss around the gums
-Deep root tarter is present
-Bone loss is over 50% causing loose teeth
-Patient must be seen by a Periodontist (Gum Specialist) for treatment

